



# Mass Shooting

Overview , Management

**Haitham Khalifa,**

Emergency Physician at El Sheikh Zayed  
specialized hospital

Member EgSEM

October 2017



**Donald J. Trump** ✓

@realDonaldTrump

My warmest condolences and sympathies to the victims and families of the terrible Las Vegas shooting. God bless you!

7:11 AM - 2 Oct 2017

29,515 Retweets 102,944 Likes



29,515 Retweets 102,944 Likes



7:11 AM - 2 Oct 2017



PARIS  
EARLIER

FOX NEWS FOX NEWS  
2:01 MT  
12 MURDERED IN ISLAMIST TERROR ATTACK  
AT FRENCH SATIRICAL NEWSPAPER  
...THERE WERE NO INJURIES IN THE BLAST, WHICH CAUSED ONLY MINOR

...THERE WERE NO INJURIES IN THE BLAST, WHICH CAUSED ONLY MINOR

2:01 MT  
FOX NEWS FOX NEWS  
12 MURDERED IN ISLAMIST TERROR ATTACK  
AT FRENCH SATIRICAL NEWSPAPER





DIRECT 18:56

ÉDITION  
SPÉCIALE

## TUNIS FRAPPÉE PAR LE TERRORISME

22 MORTS DONT 20 TOURISTES AU MUSÉE DU BARDO

URGENT

Ministre des Affaires étrangères tunisienne : «Nous avons reçu beaucoup de menaces pendant la période électorale».

URGENT

Ministre des Affaires étrangères tunisienne : «Nous avons reçu beaucoup de menaces pendant la période électorale».

ÉDITION  
SPÉCIALE

22 MORTS DONT 20 TOURISTES AU MUSÉE DU BARDO  
TUNIS FRAPPÉE PAR LE TERRORISME

# Objectives :

- **Are we ready to face new threats?**
- **Lessons Learnt from battle field**
- **Strategy for mass civilian shootings**
- **Future Preparations**

# Definition :



Incidents with more than **five** casualties perpetrated

By **one or more** assailants acting in unison over a period of time less than **24 hours** .

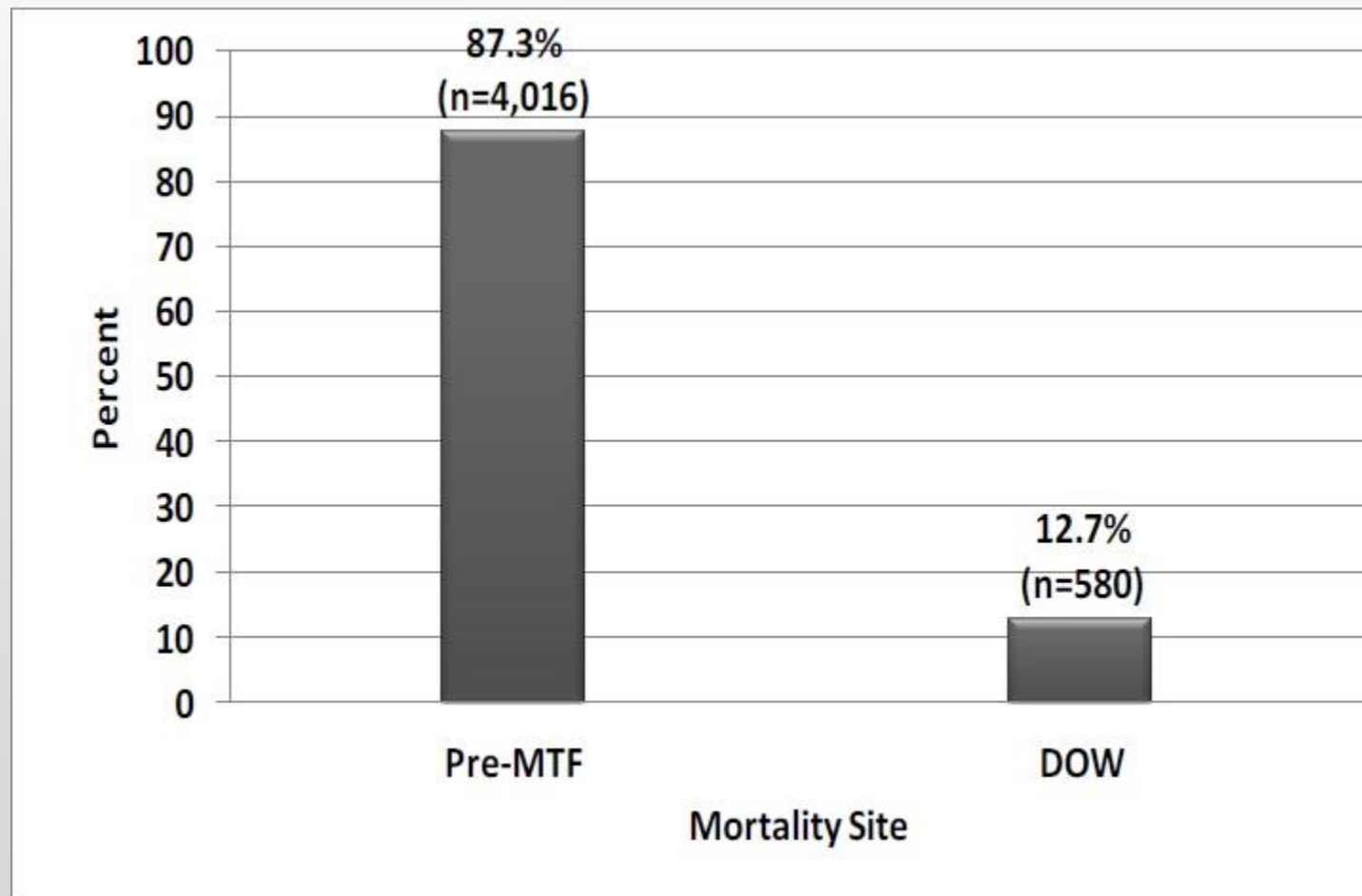
# Lesson learnt from battle field :





# Lesson learnt from battle field :

## Where Do Battle Casualties die ?

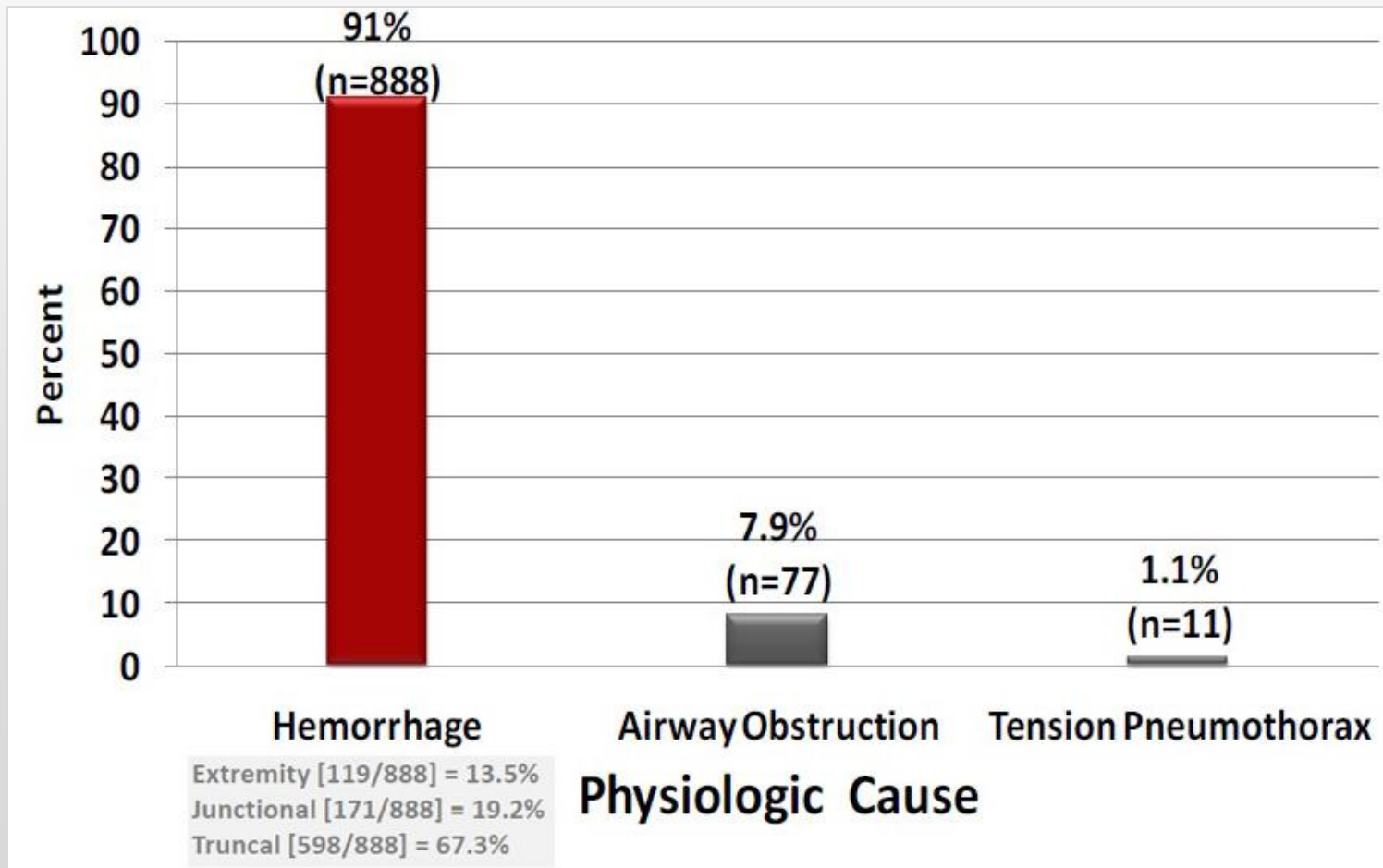


**87.3%**  
**Pre hospital**  
**(4016/4596)**



# Lesson learnt from battle field :

**What** is the main cause of death?



**91%**  
**Hemorrhage**  
**(888/976)**

# Lesson learnt from battle field :

**Which** weapon has (higher fatality) ?

Rifles

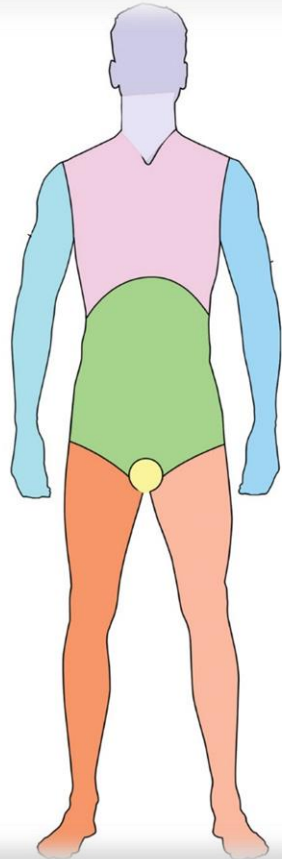
HandGuns

**ShotGuns**



# Lesson learnt from battle field :

**Which** part of the body (higher mortality) ?



**95% Head**

**58% Neck**

**75% Chest**

**25% Abdomen**

# Lesson learnt from battle field :

**What** was the timing of these Incidents ?



**Few Minutes**  
To less than  
One hour



# Preplanning is the key:

**Coordination** between :



# Care Zones :

**SWAT**



**Special Weapon and Tactics**



# Care Zones : Hot Zone

**Fully Protected**

**Wind Shield Survey**

**Detect Strange People**

**Secured Staging area**

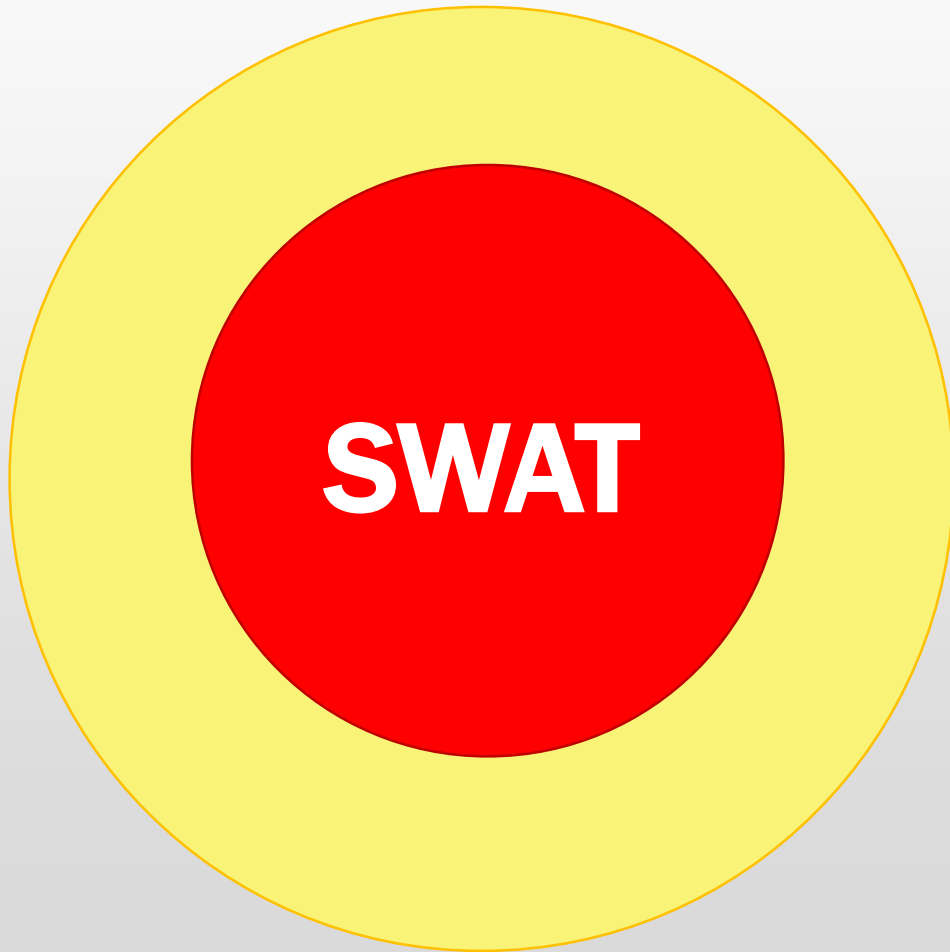
**Cover Area**

**Escape Route**

**Incident Command System**



# Command :



**Warm Zone:**  
threat may exist but is not  
**immediate or direct**



# Command :



**SWAT**



**First Aid & EMT**

# Management Strategy :

- 1 Care Under Fire**
- 2 Tactical Field Care**
- 3 Tactical Evacuation Care**

# Scenario 1

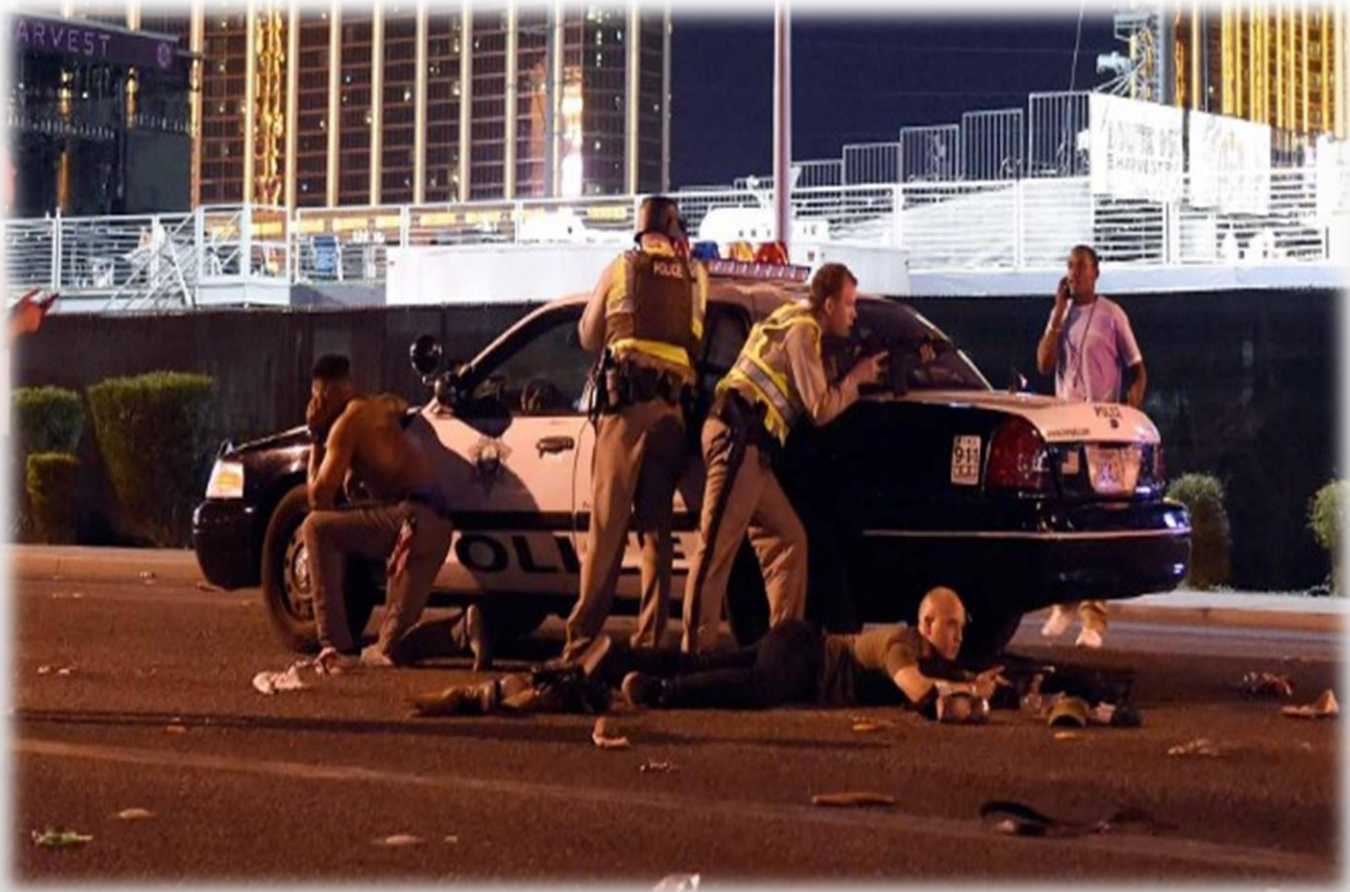


Rebecca Ash

- **Multiple Gunmen**
- **Crowded Courtyard**
- **Hand Guns**
- **Scoped Hunting rifles**
- **500 Person**
- **Heavy firing**



# Scenario 1



- **SWAT Arrived in Minutes**
- **People Running**
- **Multiple Injuries**
- **“Life Threatening”**
- **Dead people**
- **Situation still uncontrolled**
- **No safe Exit till now**

**Which Medical Strategy**



1

# Care Under Fire Strategy :

Causalities “Extraction” to a safe point



Causalities Vs **Mission**

# 1 Care Under Fire Strategy :



Stop **Life Threatening** Hemorrhage only

# ① Care Under Fire Strategy :



**hemostatic dressing**    **Not Generally feasible in CUF**



# 1 Care Under Fire Strategy :



**Airway Management** **Deferred to Tactical field care**

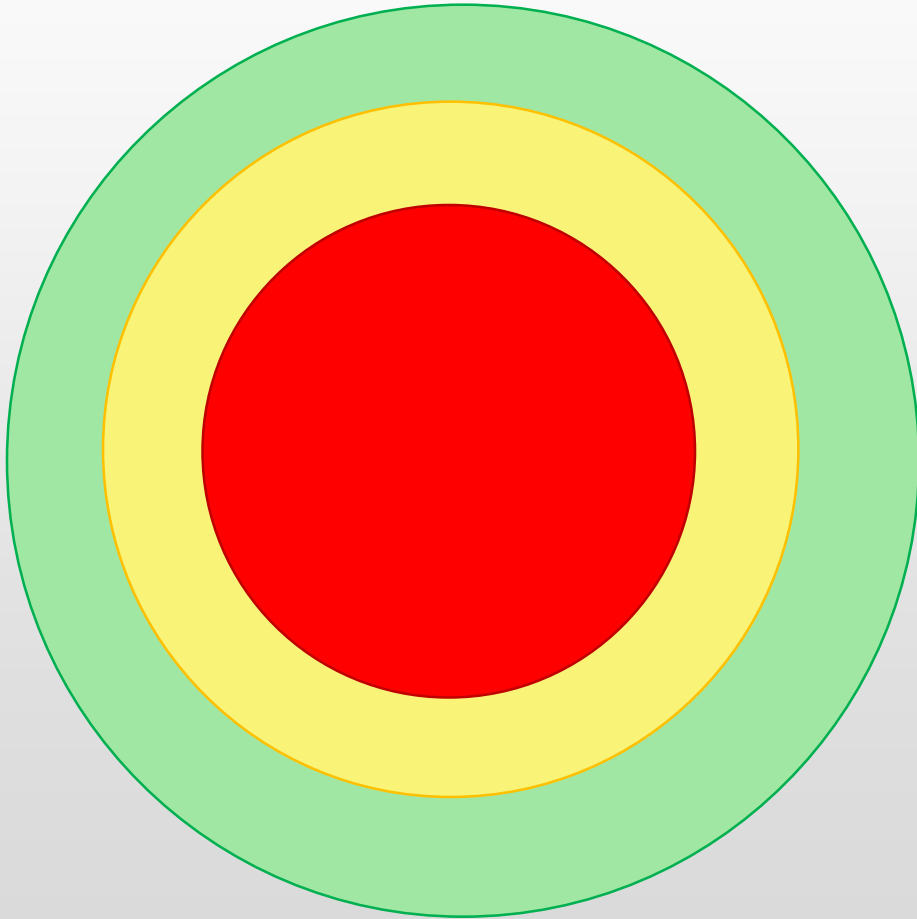


# 1 Care Under Fire Strategy :



C-Spine Stabilization **No Need**

## 2 Tactical Field Care



# 2 Tactical Field Care **MARCH**

- M** Massive Hemorrhage
- A** Airway
- R** Respiration
- C** Circulation / CPR
- H** Head Injury / Hypothermia





2

# Tactical Field Care

M

Massive Hemorrhage



2 hours Mark Save the limb



2

## Tactical Field Care

M

Massive Hemorrhage



Stop Bleeding with **Junctional Tourniquet**

2

# Tactical Field Care

M

Massive Hemorrhage



Stop Bleeding with **hemostatic adjuncts**

2

# Tactical Field Care

M

Massive Hemorrhage



**X Stat**



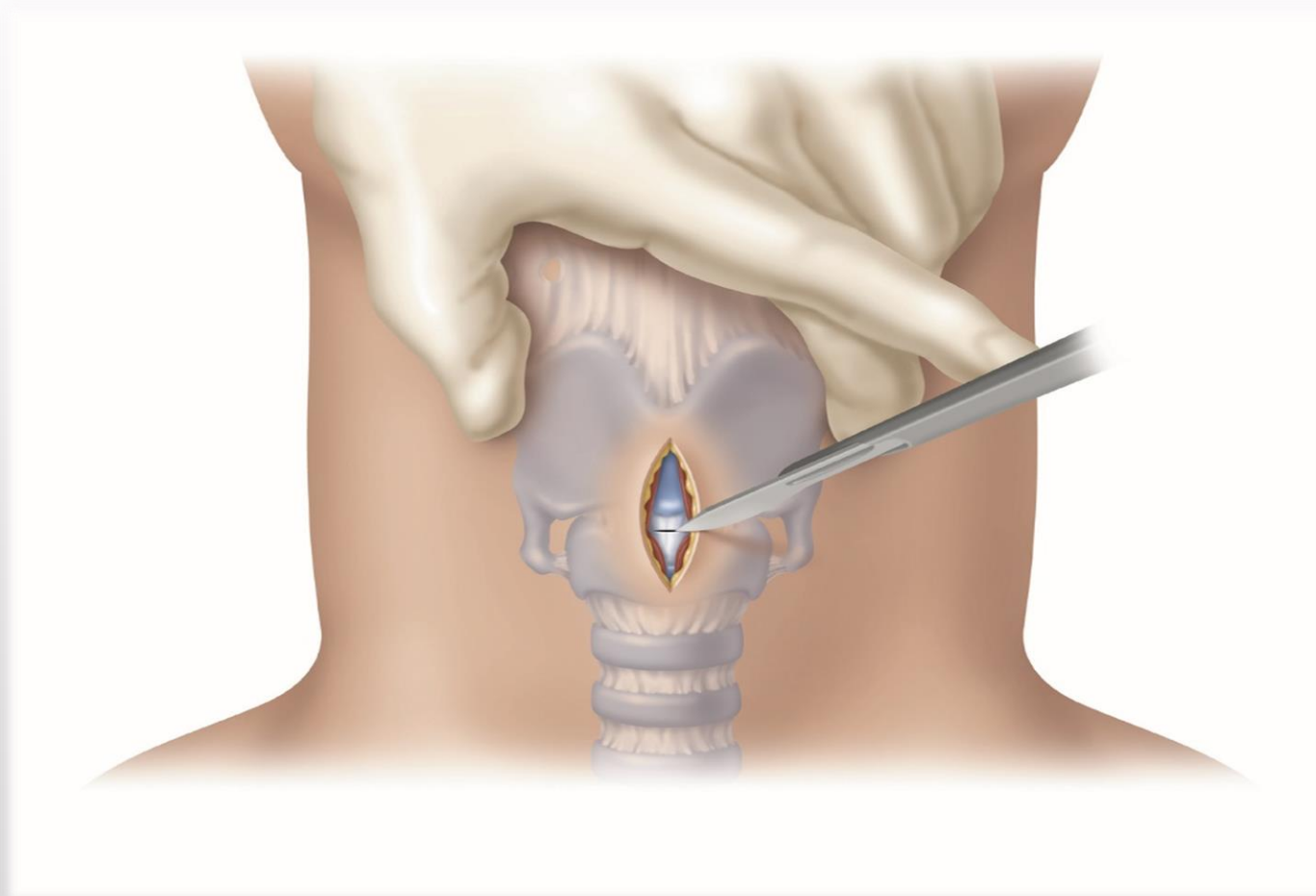
Stop Bleeding with **hemostatic adjuncts**

2

## Tactical Field Care

A

Airway



**Unconscious** and/or with airway obstruction



# 2

## Tactical Field Care

R

Respiration



Pneumothorax / Open Sucking chest Wound

2

# Tactical Field Care

C

Circulation



2

# Tactical Field Care

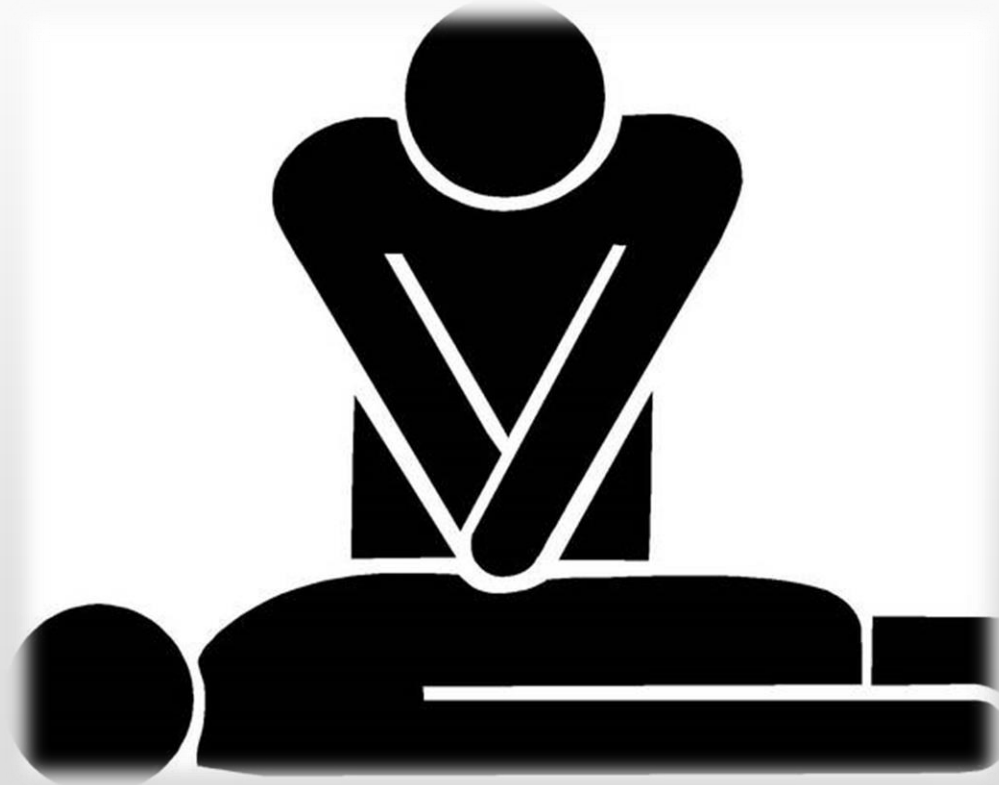
C

Circulation



2

# Tactical Field Care CPR



NO Battle Field CPR



2

# Tactical Field Care

H

Head Injury / Hypothermia



Hypothermia easier to **protect** than to treat

2

# Tactical Field Care

H

Head Injury / Hypothermia



Penetrating Eye Injury

# 2

## Tactical Field Care

## Pain Management

- Mild to Moderate
- Moderate to Severe  
**not in Shock**
- Moderate to Severe  
**not in Shock**



## 2 Tactical Field Care Antibiotic

- Able to take PO Moxifloxacin
- Unable to take PO Ertapenem



# 3 Tactical Evacuation Care



# 3 Tactical Evacuation Care

**M**

**Massive Hemorrhage**

**A**

**Airway**

**R**

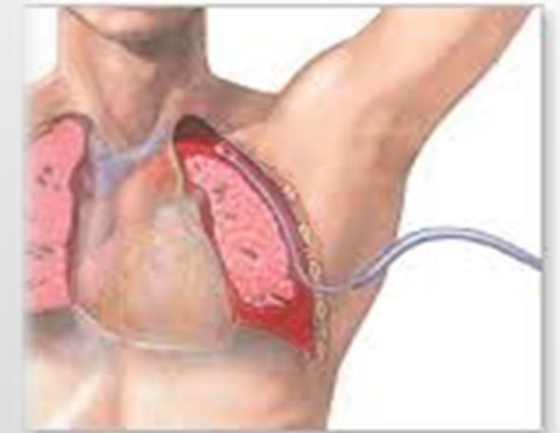
**Respiration**

**C**

**Circulation / CPR**

**H**

**Head Injury / Hypothermia**



# Future ?

**Preplanning** is the Key

# Preplanning is the key:



**"No one knew what to do,"**  
Schneider said.

**"It's literally running for  
your life and you don't know  
what decision is the right  
one, I knew we had to get  
out of there."**



**Preplanning is the key:**

**HOW TO  
SURVIVE A MASS  
SHOOTING**

# How to Survive (open area):



Don't Assume it is **firework**

# How to Survive (open area):



"Start moving, **don't wait,**"



# How to Survive (open area):



Hide **“Shield from Gunfire”**



# How to Survive (open area):



Listen to **a pause**

# How to Survive (Closed area):

A close-up, dark blue-tinted image of a police helmet. The word "POLICE" is visible on the side. The word "RUN" is overlaid in large, white, sans-serif capital letters.

RUN

A dark blue-tinted image showing a magnifying glass on the left and a document titled "DESCRIPTION FORMS" on the right. The word "HIDE" is overlaid in large, white, sans-serif capital letters.

HIDE

A dark blue-tinted image of a University of Pittsburgh Police badge. The badge features a building and the text "UNIVERSITY OF PITTSBURGH" and "POLICE". The word "FIGHT" is overlaid in large, white, sans-serif capital letters.

FIGHT

# Summarize :

- **Lessons Learnt from battle field**
- **Strategy for mass civilian shootings**
  - 1 Care Under Fire**
  - 2 Tactical Field Care**
  - 3 Tactical Evacuation Care**
- **Future Planning**

**Any Question ??**