

**13TH NATIONAL
EMERGENCY MEDICINE CONGRESS**



ATUDER
Acil Tıp Uzmanları Derneği



EPAT
Emergency Physicians Association of Turkey

**4TH INTERCONTINENTAL EMERGENCY MEDICINE CONGRESS
INTERNATIONAL CRITICAL CARE AND EMERGENCY MEDICINE CONGRESS**

MARDAN PALACE HOTEL - ANTALYA

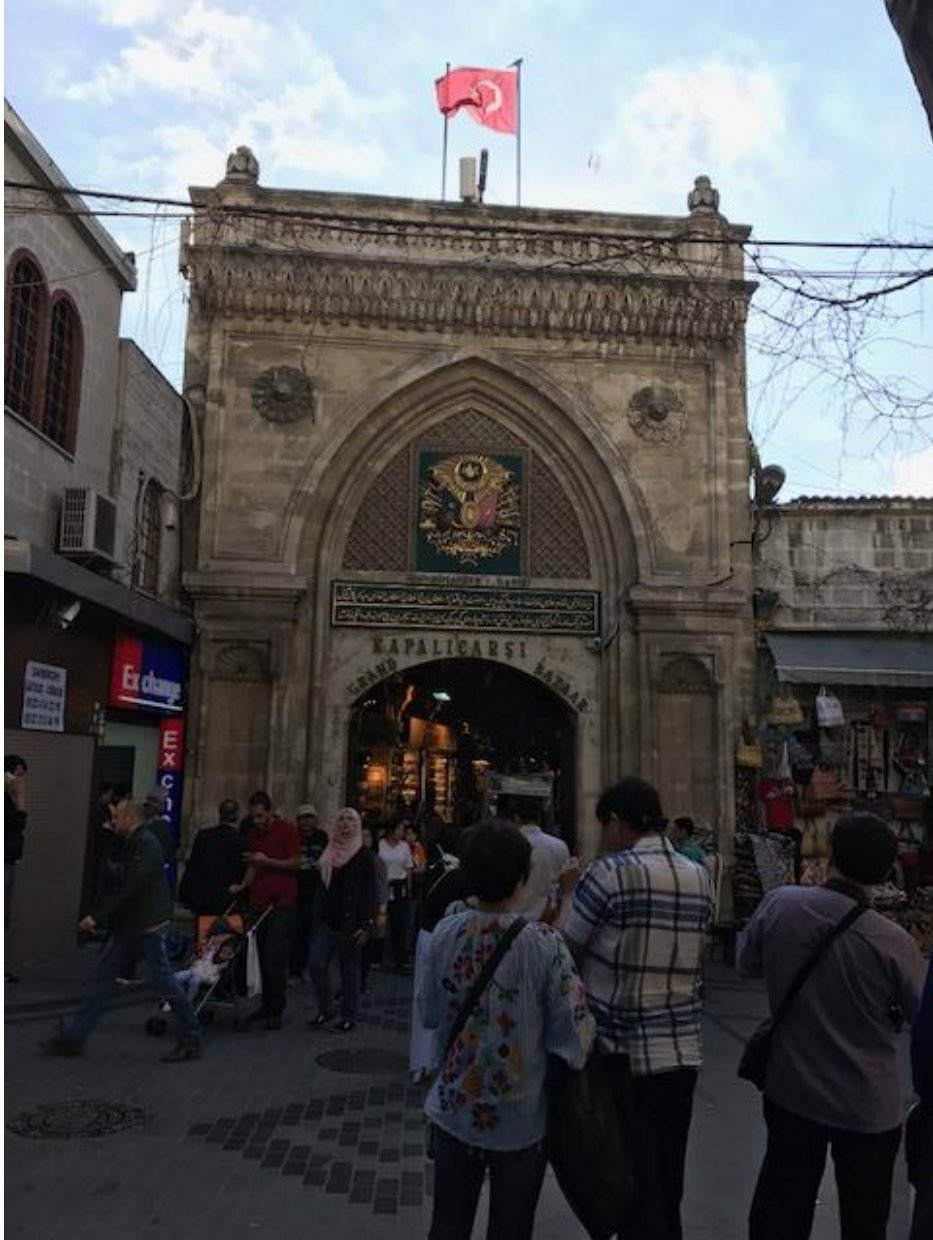
18-21 MAY 2017

Crisis Standard of Care and Alternate Care

Dr. Constantine Au
Hong Kong

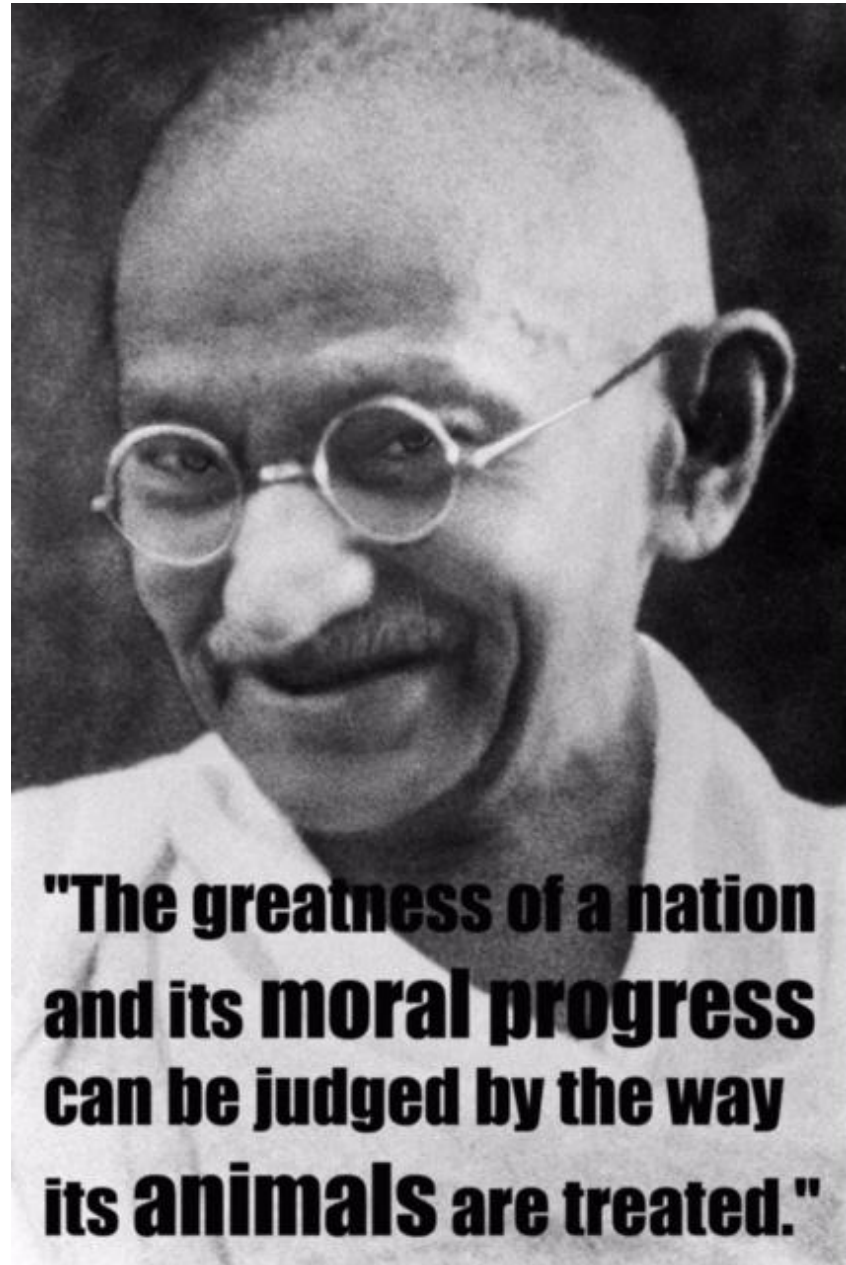
Conflict of interest: unfortunately none











**"The greatness of a nation
and its moral progress
can be judged by the way
its animals are treated."**

Turkey is a great nation

The largest host country of over
2.7 million Syrian **refugees**

**Ahmet, my guide: we must help them
as they are our neighbours.**

Crisis:

Demand >>> Service available

Bad timing always

Crisis Care = Substandard Care



Disasters in Hong Kong





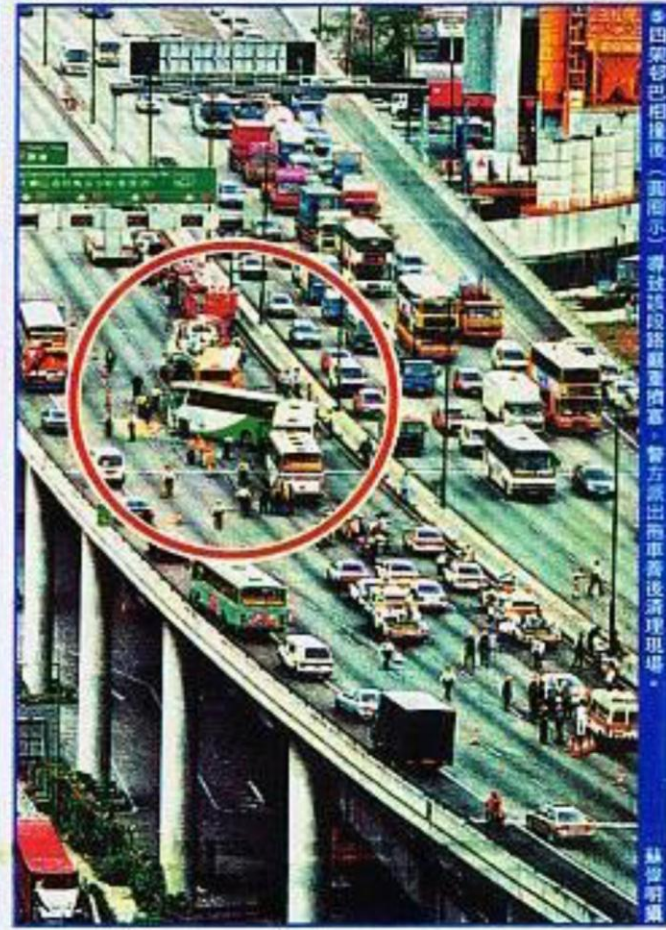
薄霧有陣雨
 23℃ 26℃



青葵公路封四句鐘 車龍塞至屯門



連環車禍 青葵公路出九龍橋面，昨晨發生二十年來傷者最多的交通意外。三輛有牌及一輛無牌巴士，在繁忙時間駛往九龍途中，疑閃避一輛切線平治私家車，導致首尾相撞，一百一十名乘客及司機受傷，青葵公路封閉近四小時，車龍塞至屯門市中心。至傍晚下班時間，一輛運油車沿屯門公路出九龍，駛至掃管笏時翻車，漏出大量柴油，導致屯門公路封閉三小時。新界交通大癱瘓（詳見A8）。有碼鐘



四號巴士相撞後（圖圈示）導致該段路嚴重擠塞，警方派出拖車清理現場。

絲帶明攝





Explosion in Taiwan



Fire accidents in China





When and how did crisis management
start in Hong Kong?



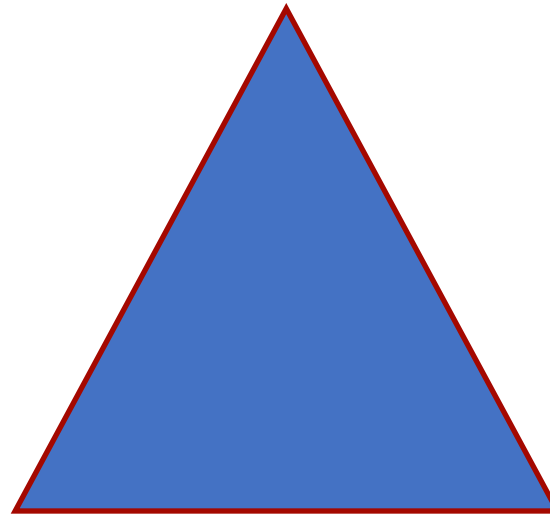
1992 - 1993

Security Bureau Circular No. 3/2007

**CONTINGENCY PLAN
FOR NATURAL DISASTERS**

**(INCLUDING THOSE ARISING FROM
SEVERE WEATHER CONDITIONS)**

Security
Bureau



HA Hospitals
with AED

NGO's

Prevention -

Law enforcement

Drills/Training

Standardization of training,
equipment and protocols

Event Management -

Location (time)

Service

Overall Demand

Post-event Evaluation

Advance planning is
crucial – anticipation e.g.
Airport Accident, Railway



Manpower and resources –
be prepared

Public Engagement - the use of lay-volunteers e.g. St. John Ambulance, Red Cross.

Ensure that a plan for managing volunteers – training and drills



At the hospitals and institutional level

expand staff capacity

contingency plans



Develop a strategy to
acquire additional equipment/ supplies



Develop a communication
process
staff, volunteers and
community **understands**





Decrease the number of routine care activities that are performed.

Decrease documentation of care.

Decrease stringent rules about privacy and confidentiality to facilitate

Transfer of information between health care providers.



Cancel elective procedures and appointments.

Restrict visitors and limit hospital entry to a few key entrances and plan for increased security needs.

Palliative care

1. patient care physical
symptom management
2. psychological symptom
management
3. support for family and
close persons
4. spiritual support




Hong Kong
after that sad incident





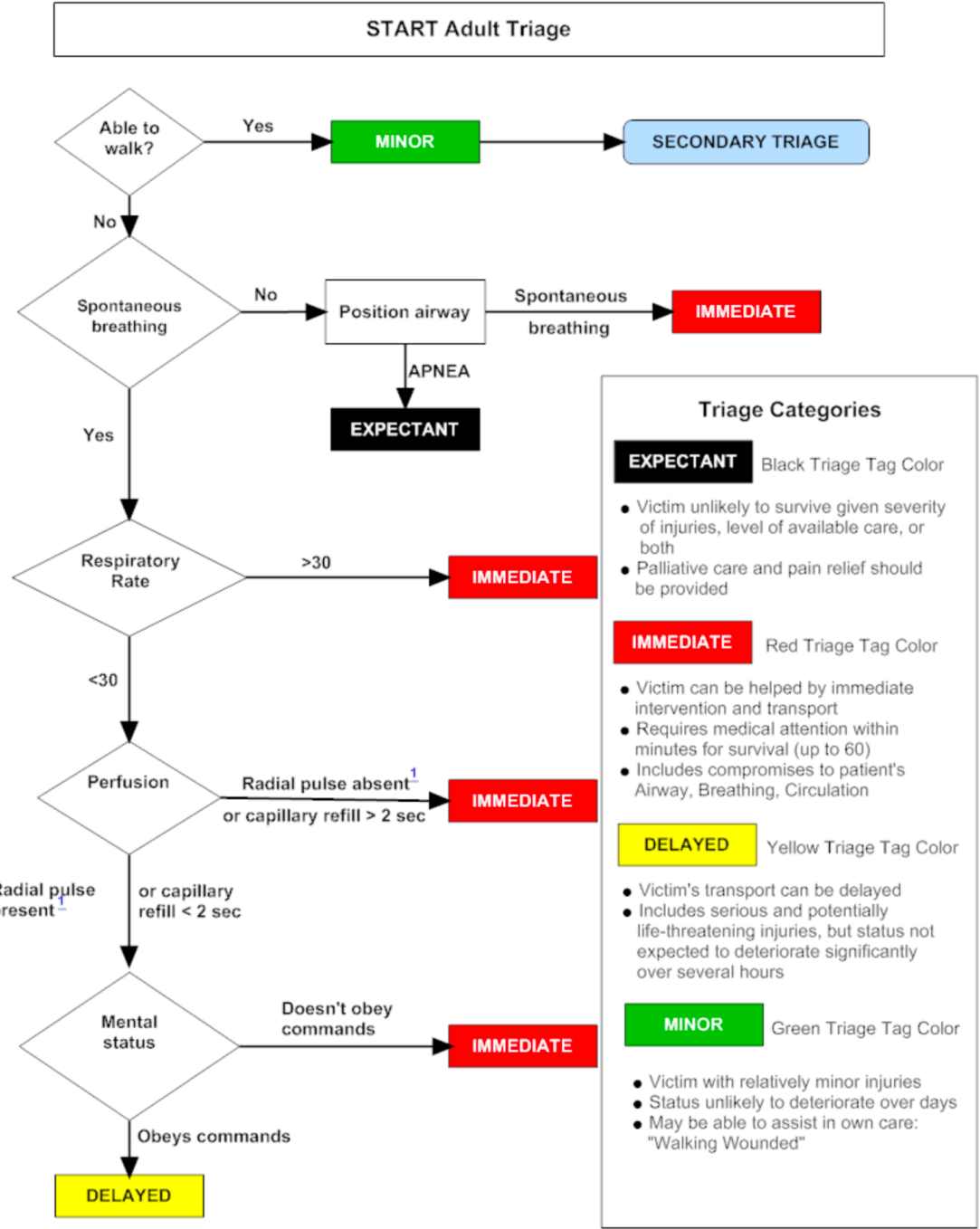
第一優先
TOP
PRIORITY

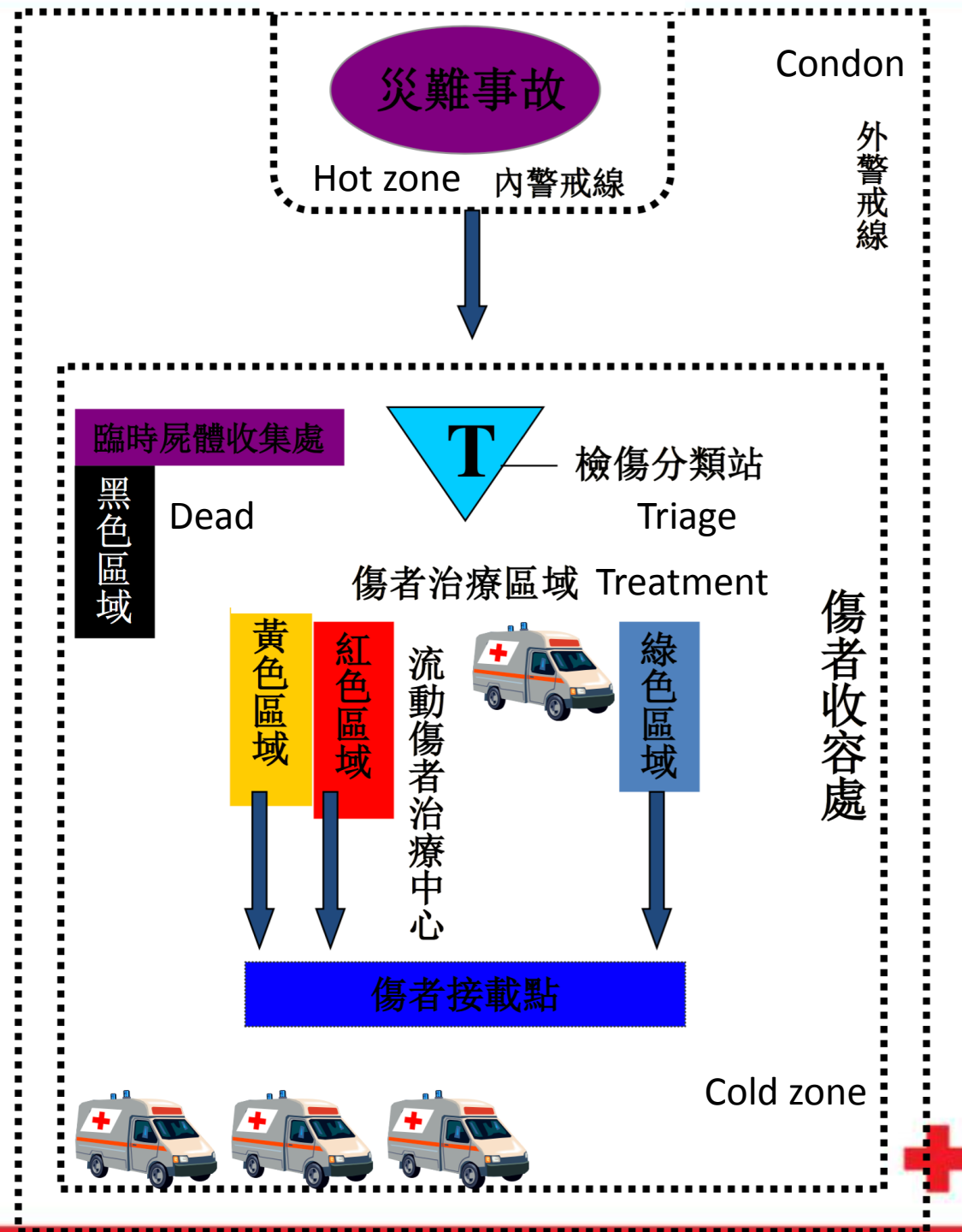
死亡
DEAD

Name: _____		Patient (or Subject): 姓名: 姓和名		Treatment 治療		Date 日期	
Respiratory or Facial Strain: <input type="checkbox"/>				WOUNDS 傷 - 創 W - Wound 傷口 S - Shave 剃鬚 F - Fracture 骨折 H - Hemorrhage 出血 I - Internal Hemorrhage 內出血			
Injury to Facial Strain: <input type="checkbox"/>							
Injury to Limbs: <input type="checkbox"/>							
Injury to Head: <input type="checkbox"/>							
Patient's Name: _____		TREATMENT GIVEN 已給予的治療					
Respiratory Rate: _____		Patient is to be seen by 應再診					

第二優先
2nd
PRIORITY

第三優先
WALKING
WOUNDED







Ambulance Incident
Officer



Casualty
Clearance
Station



Ambulance
Loading
Zone



Treatment
Area for
Green



流動傷者治療車(MCTC)



NGO's /Lay-volunteers





Drills

Airport
Railway



10/11/2009 vs.
1992/93

部份死傷者名單

姓名：葉君媛（17歲）

傷勢：/ 情況：死亡

姓名：沈志超（21歲）

傷勢：右手臂及身體右側 情況：危殆、伊利沙伯醫院留醫

姓名：鍾嘉豪（20歲）

傷勢：不詳 情況：危殆、伊利沙伯醫院留醫

姓名：王詩緣（23歲）

傷勢：右前臂被削斷、右腳重創 情況：危殆、伊利沙伯醫院留醫

姓名：彭企東（41歲）

傷勢：頭部受傷及腦積血 情況：危殆、伊利沙伯醫院留醫

姓名：廖卓梅（24歲）

傷勢：不詳 情況：危殆、威爾斯親王醫院留醫

姓名：黃杏儀（19歲）

傷勢：不詳 情況：危殆、威爾斯親王醫院留醫 🚑

SARS in 2003





ACEP Guideline



Hospitals should be reserved for the most critically ill.

Where?

Home (phone triage and home health care)

Extended care facilities or skilled nursing facilities

Ambulatory surgical centers

Community clinics

Physicians' offices

Mental health clinics

College or school health centers

Temples, Churches and other
public meeting places

Shelters

Public health points of
dispensing

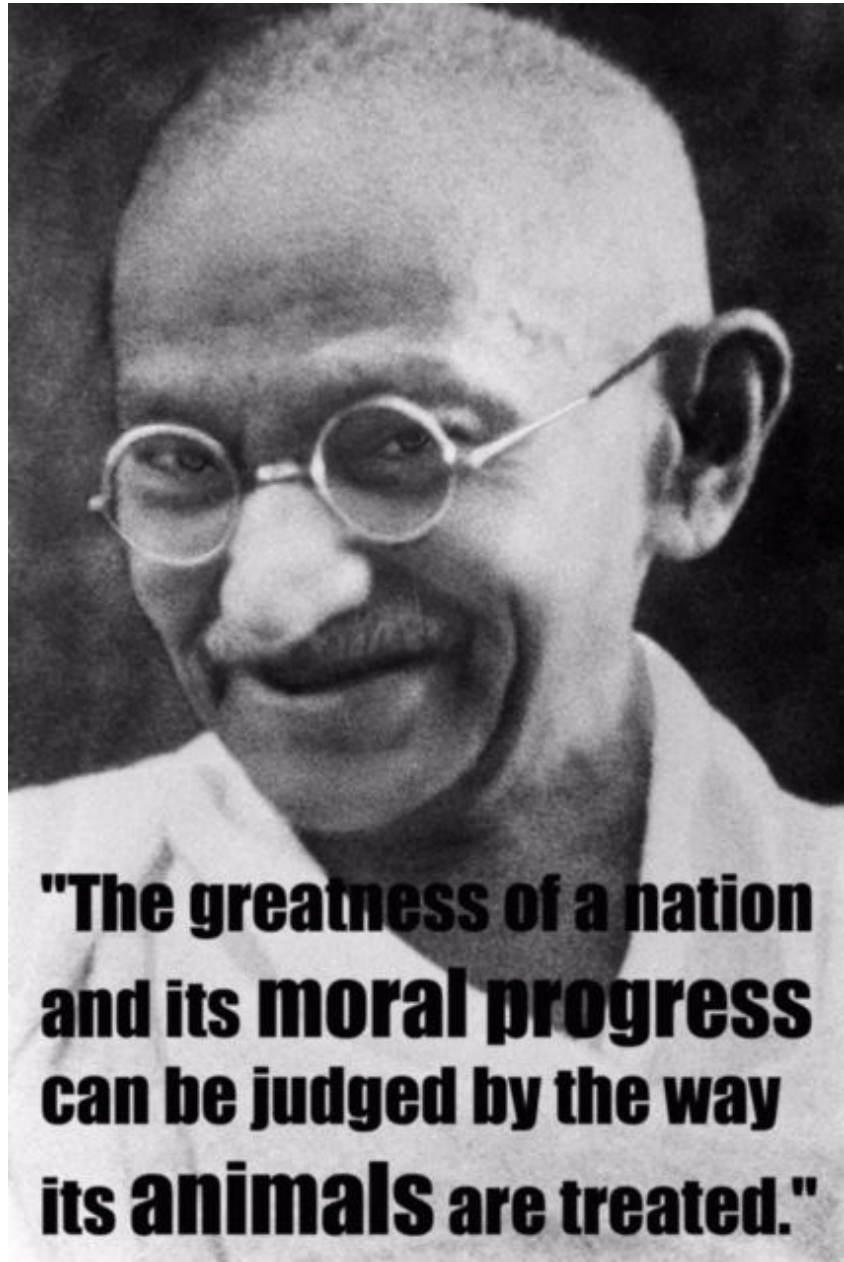
Pharmacies

Dialysis Centers

Triage – reliable? Accurate?

Community?

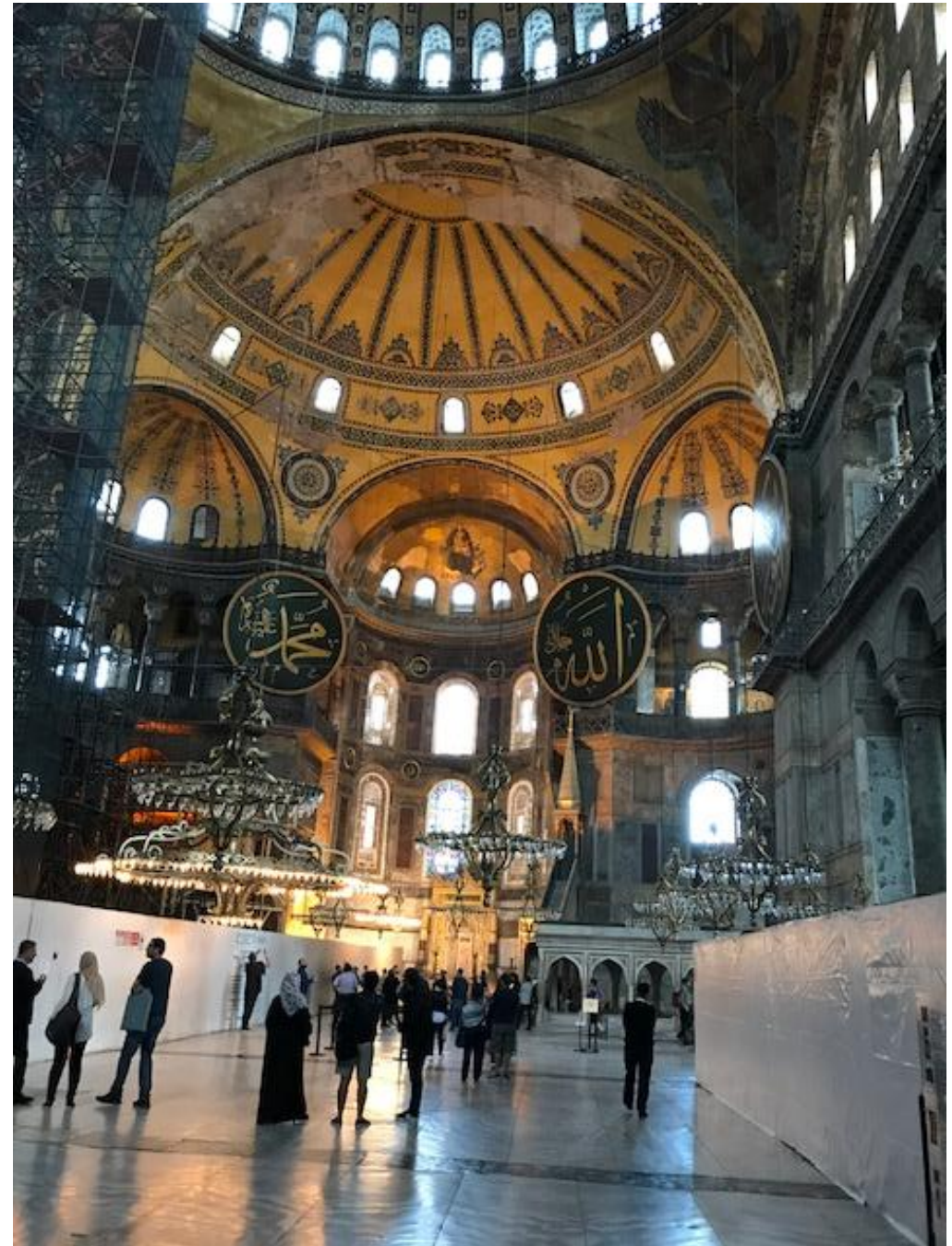
How to ensure the standard of care?



Glee and Ahmet
Hagia Sophia



Attitude matters



Crisis Care = Substandard Care – > almost standard



Teşekkürler