

Potable Water Delivery and Management In Disasters

Matt Capobianco

Deputy Director - GlobalMedic





OPERATIONS

184

RESPONSES

63

COUNTRIES





GLOBALMEDIC
EMERGENCY WATER PROGRAM

- Clean water is by far our most important response.
- More efficient to prevent illness than to treat illness
- GlobalMedic has helped create many millions of litres of drinking water around the world



844 Million

1 in 9

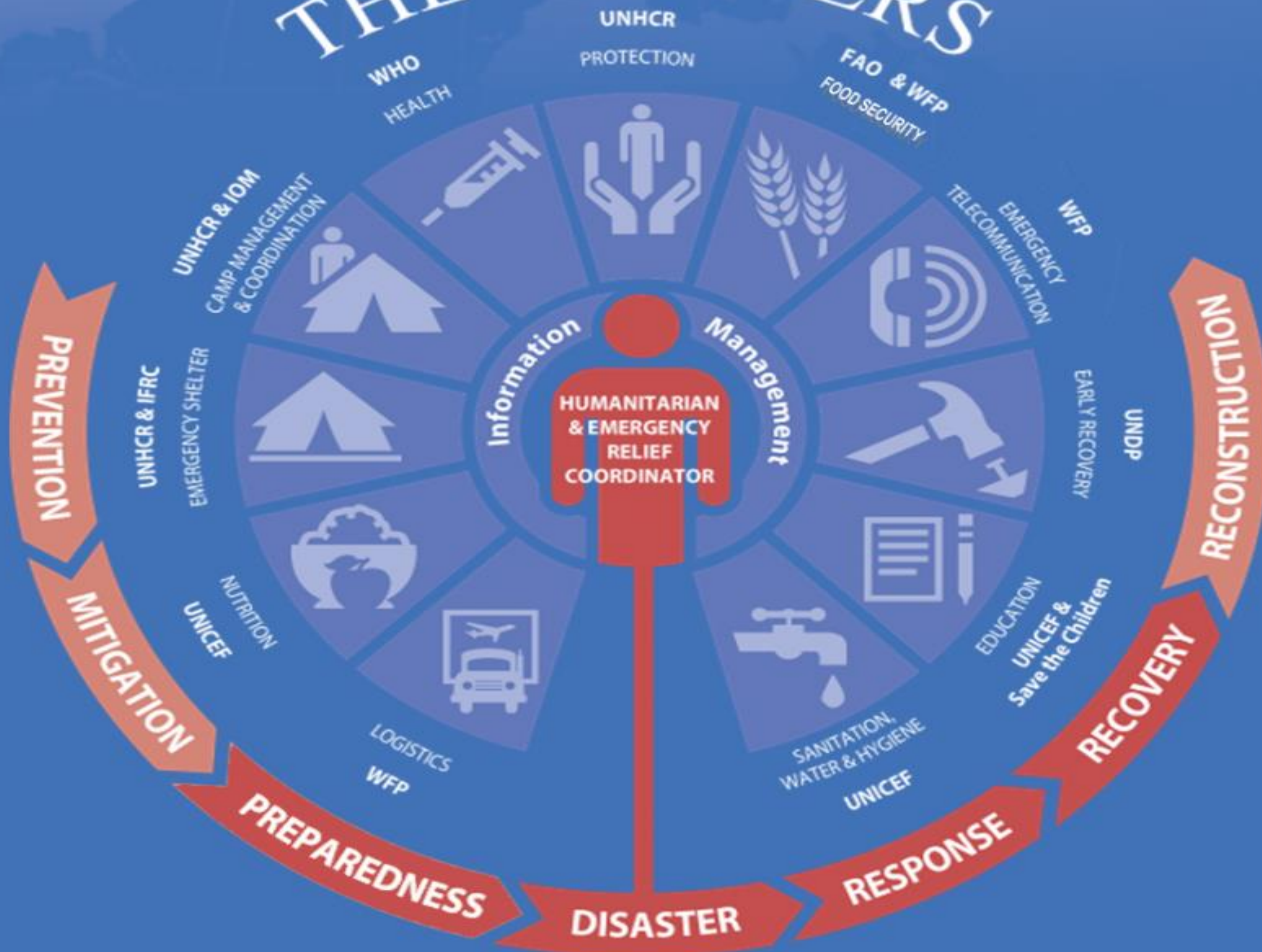
- Water Crises = Health Crises
- + Child mortality – Maternal Mortality – Sexual Violence
- - Ability to fight disease – Dignity – School attendance

1 Million

- Dysentery
- Cholera
- Typhoid
- Hepatitis
- Other microorganisms and bacteria



THE CLUSTERS





RESPONSE SPECIFIC PROGRAMMING

HAITI EARTHQUAKE 2010

HURRICANE IRMA / HURRICANE MARIA 2017

SYRIAN CONFLICT



GLOBALMEDIC
EMERGENCY WATER PROGRAM



GLOBALMEDIC
EMERGENCY WATER PROGRAM

**HOW DO WE IDENTIFY WATER SOURCES
AND
WHAT ASSETS ARE NEEDED**



GLOBALMEDIC
EMERGENCY WATER PROGRAM

CHALLENGES IN THE LOCAL CONTEXT

Point of Source Purification



Point of Source Purification



Point of Use Purification



Point of Use Purification



Point of Use Purification



Mobile Purification and Delivery





GLOBALMEDIC
EMERGENCY WATER PROGRAM

PRE-POSITIONING AID



GLOBALMEDIC
WWW.GLOBALMEDIC.CA

HYGIENE KITS

- Hygiene kits are a very important component of many humanitarian aid programs :
- Often our hygiene kits are combined with Point of Use water purification units to create Family Emergency Kits



GLOBALMEDIC
WWW.GLOBALMEDIC.CA

QUESTIONS?



 GLOBALMEDIC